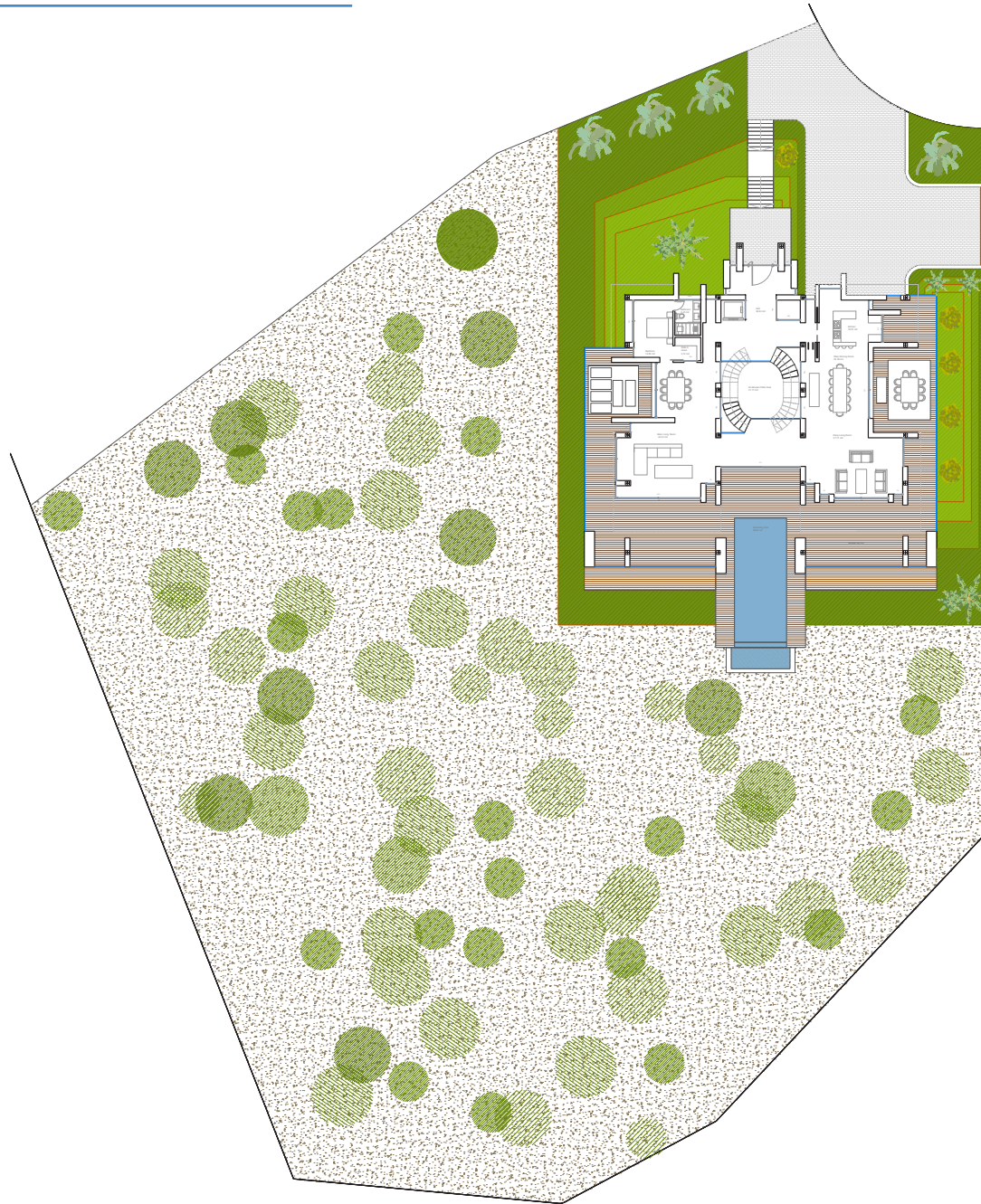


# MASTERPLAN

---

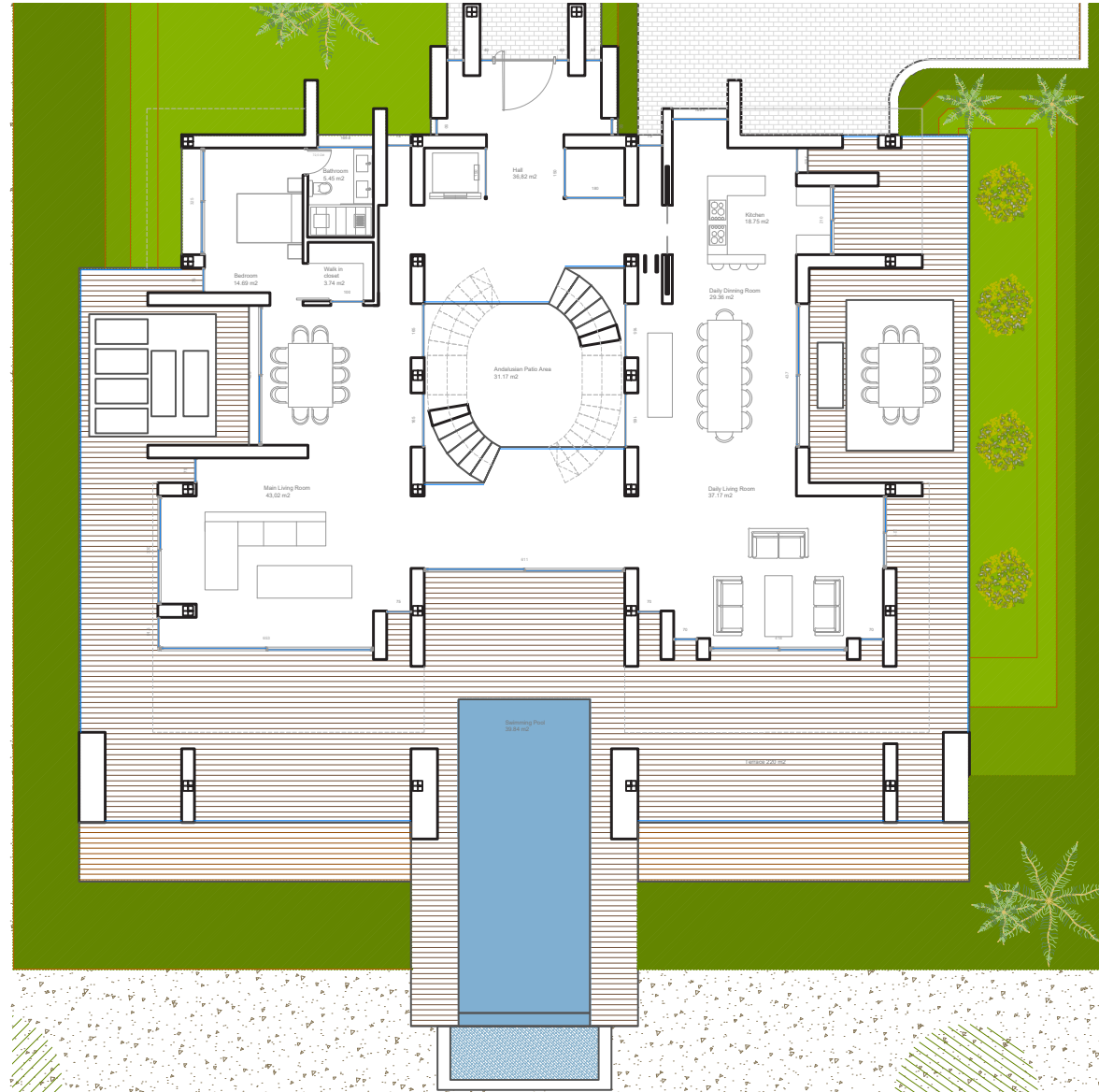


# BASEMENT



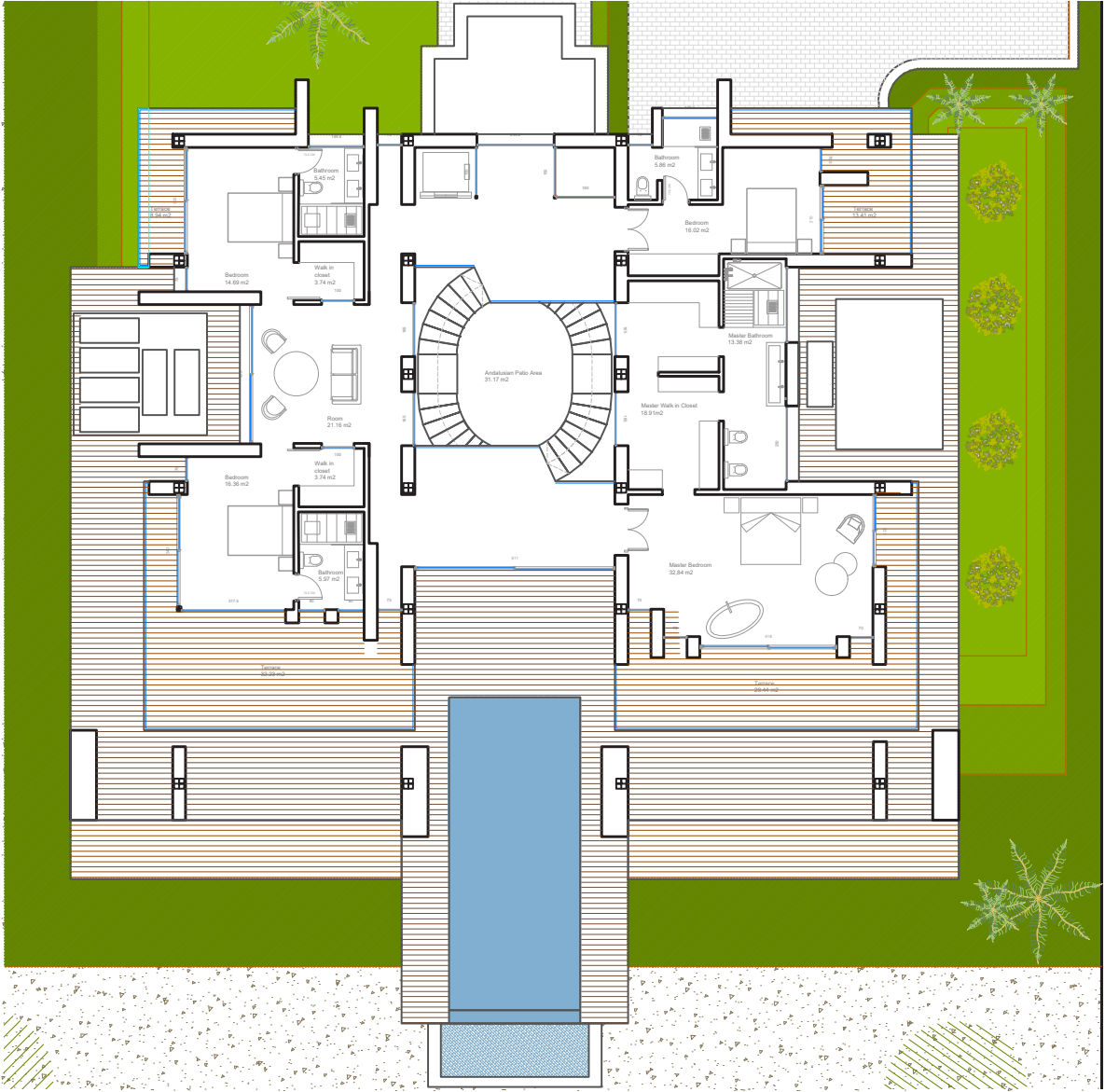
Built Living Area: 380 m<sup>2</sup>  
Terraces: 192 m<sup>2</sup>  
Pool: 9 m<sup>2</sup>

# GROUND FLOOR



Built Living Area: 305 m<sup>2</sup>  
Terraces: 253 m<sup>2</sup>  
Pool: 49 m<sup>2</sup>

# FIRST FLOOR



Built Living Area: 284 m2  
Terraces: 86 m²